

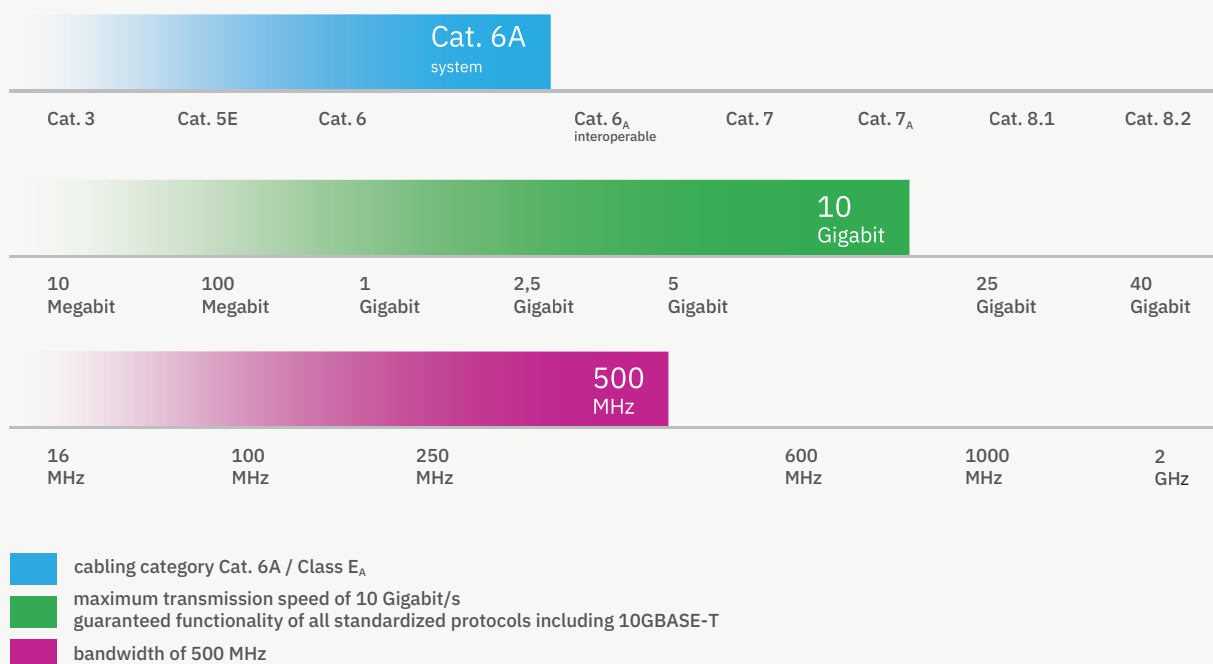
Cat. 6A / Class E_A system

This system is disadvantaged from a long-term perspective, as only components from a certain manufacturer are suitable for this solution.

From 2006 to 2010, Cat. 6A / Class E_A systems played a major role, as they were the only way to implement cabling with performance of 10 Gigabit/s.

This solution has been surpassed by the advantages of Cat. 6_A interoperable components.

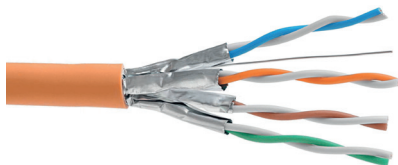
The Cat. 6A / Class E_A system meets the expectations and needs of users with the highest demands on the quantity of transferred data.



Cat. 6A / Class E_A system cabling ensures:

- immunity to electromagnetic interference and Alien Crosstalk
- performance category Cat. 6A and Class E_A for channel topology mentioned in the certificate only (one of the following: 2 -, 3 - or 4 - connector channel)
- performance category Cat. 6A and Class E_A for channel with components mentioned in the certificate

10 Gigabit Cat. 6_A interoperable 550 MHz LSOH



STP cable 4x2xAWG23, Category 6_A, 550 MHz, LSOH, Euroclass B2_{ca} - s1a, d1, a1

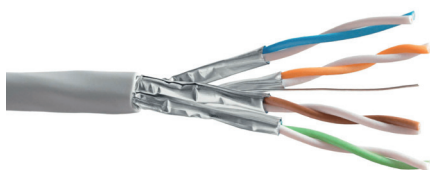
P/N: KE550HS23-B2ca

500 m on a reel

- each pair individually shielded with AL/PET foil, halogen-free sheath
- enables transmission of all high-speed protocols including 10GBASE-T
- tested in a bandwidth up to 550 MHz

Min. bending radius	installation	58 mm
	operation	29 mm
Max. tensile load		100 N (10 kg)
Temperature range	installation	0°C to +50°C
	operation	-20°C to +60°C
Outer cable diameter		7,2 mm
Copper conductor diameter		AWG 23
NVP		78 %
Reaction to fire		B2 _{ca} – s1a, d1, a1
Fire safety		flame retardant, low smoke, zero halogen, non-corrosive

10 Gigabit Cat. 6_A interoperable 550 MHz LSOH



STP cable 4x2xAWG23, Category 6_A, 550 MHz, LSOH, Euroclass D_{ca} - s2, d2, a1

P/N: KE550HS23/1E-Dca

500 m on a reel

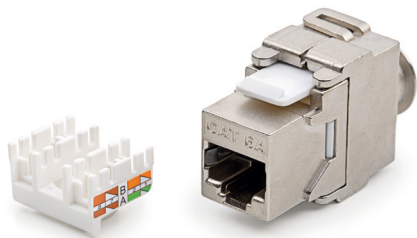
- each pair individually shielded with AL/PET foil, halogen-free sheath
- enables transmission of all high-speed protocols including 10GBASE-T
- tested in a bandwidth up to 550 MHz

Min. bending radius	installation	56 mm
	operation	28 mm
Max. tensile load		100 N (10 kg)
Temperature range	installation	0°C to +50°C
	operation	-20°C to +60°C
Outer cable diameter		6,9 mm
Copper conductor diameter		AWG 23
NVP		78 %
Reaction to fire		D _{ca} – s2, d2, a1
Fire safety		flame retardant, low smoke, zero halogen, non-corrosive

10 Gigabit

Cat. 6A systém

500 MHz



Keystone Jack, Category 6A, RJ45/s

P/N: KEJ-CEA-S-10G

- tool-free, fast and easy installation
- enables transmission of all high-speed protocols including 10GBASE-T within the system
- guarantees a bandwidth of 500 MHz within the system
- perfectly shielded against Alien Crosstalk and electromagnetic interference
- suitable for a wide range of outlets, duct and channel systems

Note see compatible outlets on p. 060

Suitable for installing on cables	with solid wires from 0,51 to 0,64 mm (from AWG 24 to AWG 22)
Required installation depth	for sockets with angled faceplates 15 - 40 mm
	for sockets with straight faceplates 40 mm
Contact pin material	phosphor-bronze alloy coated with 6 µ of gold
Insertion / extraction cycles	min. 750

10 Gigabit

Cat. 6A systém

500 MHz

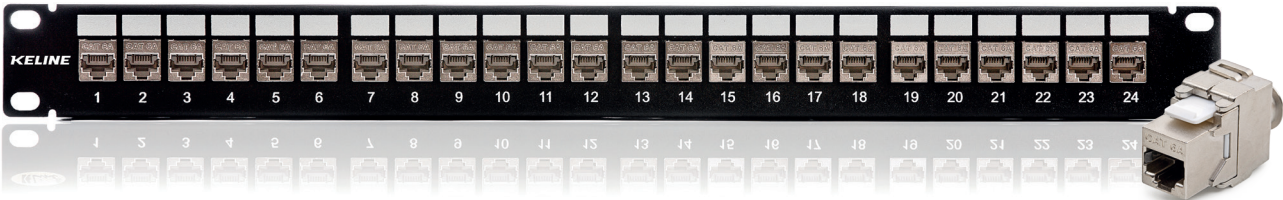


Patch panel, Category 6A, 24xRJ45/s, black, keystones included

P/N: KEP-CEA-S-10G

- 24 keystone jacks KEJ-CEA-S-10G (on p. 026) included
- designed for 19" cabinets
- integrated cable management
- cable ties for gripping (24 pcs)
- set of M6 screws and captive nuts (4 pcs)
- grounding screw and washer (1 pc)

Height	1U (44,5 mm)	
Width	19" (482,6 mm)	
Depth (including cable management)	152 mm	
Material	front face	steel
	cable management	nickel-plated steel, corrosion-resistant
Color	black RAL 9005	
Surface	structured, matt	



10
GigabitCat. 6_A
interoperable500
MHz

LSOH

gray
without marking

P/N: KEL-C6A-P-xxx

green
-GN

P/N: KEL-C6A-P-xxx-GN



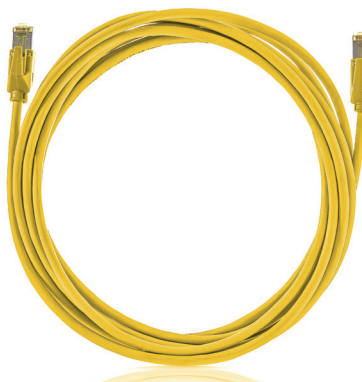
black

-BK

P/N: KEL-C6A-P-xxx-BK

yellow
-YE

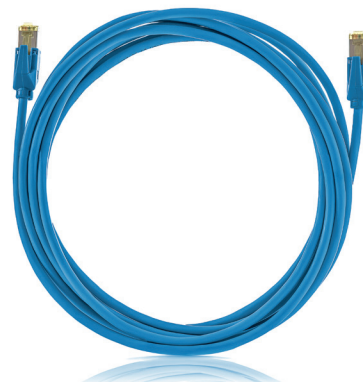
P/N: KEL-C6A-P-xxx-YE



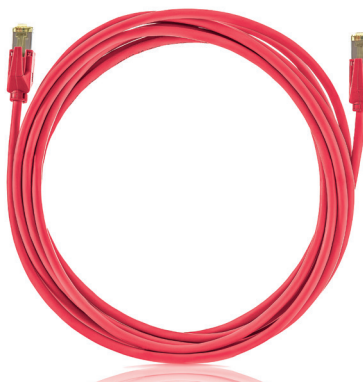
blue

-BL

P/N: KEL-C6A-P-xxx-BL

red
-RD

P/N: KEL-C6A-P-xxx-RD



Patch cable STP, Category 6_A, LSOH

P/N: KEL-C6A-P-005	0,5 m	P/N: KEL-C6A-P-070	7 m
P/N: KEL-C6A-P-010	1 m	P/N: KEL-C6A-P-010	10 m
P/N: KEL-C6A-P-015	1,5 m	P/N: KEL-C6A-P-120	12 m
P/N: KEL-C6A-P-020	2 m	P/N: KEL-C6A-P-150	15 m
P/N: KEL-C6A-P-030	3 m	P/N: KEL-C6A-P-200	20 m
P/N: KEL-C6A-P-050	5 m		

- individually shielded pairs with stranded wires, halogen-free sheath
- connector RJ45 with patented multi-layered arrangement of contacts
- connector RJ45 complies with IEC 60603-7-x standard by its dimensions and transmission features
- enables transmission of all high-speed protocols including 10GBASE-T
- guarantees a bandwidth of 500 MHz
- perfectly shielded against Alien Crosstalk and electromagnetic interference

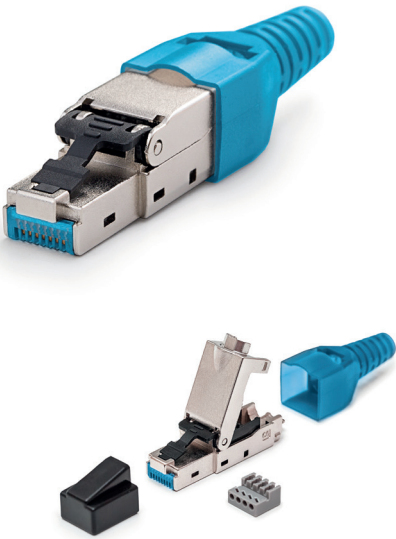
Temperature range	-25°C to +60°C
Min. bending radius	25 mm
Outer cable diameter	5,8 mm
Copper conductor diameter	AWG 27/7
Contact pin material	phosphor-bronze alloy coated with 50 μ of gold
Insertion / extraction cycles	min. 750

Note non-standard cable length must be specified in the order
xx - patch cable color:

10
Gigabit

Cat. 6A
system

500
MHz



Toolless field terminated RJ45/s connector for Cat. 7_A, Cat. 7, Cat. 6_A, Cat. 6 cables

P/N: KE-FT45-C6AS

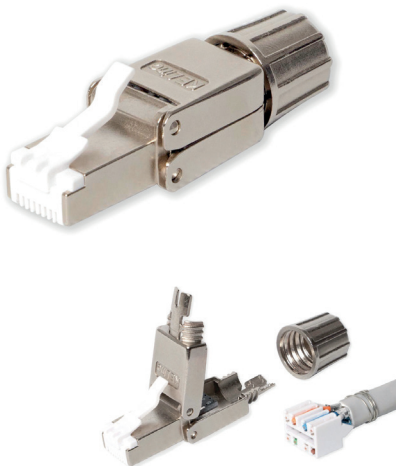
- direct termination on Cat. 7_A, Cat. 7, Cat. 6_A, Cat. 6 cables
- tool-free, fast and easy installation
- connection of IP cameras and wireless devices without the need of using outlets and patch cords
- enables transmission of all high-speed protocols including 10GBASE-T within the system Cat. 6A
- guarantees a bandwidth of 500 MHz within the system Cat. 6A
- perfectly shielded against Alien Crosstalk and electromagnetic interference

Suitable for installing on cables	with solid wires from AWG 26 to AWG 22
	with stranded wires from AWG 27 to AWG 22
	with outer diameter from 6 mm to 9 mm
Contact pin material	phosphor-bronze alloy coated with 50 μ of gold
Required installation depth	55 mm

10
Gigabit

Cat. 6A
system

500
MHz

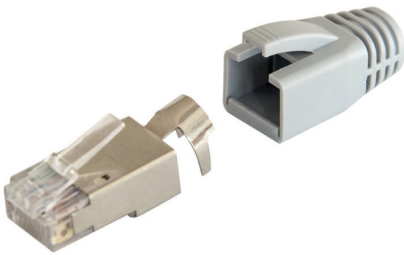


Field terminated, toolless RJ45/s connector for Cat. 7_A, Cat. 7, Cat. 6_A cables

P/N: KE-FFT45-C6AS

- direct termination on Cat. 7_A, Cat. 7, Cat. 6_A cables
- tool-free, fast and easy installation
- connection of IP cameras and wireless devices without the need of using outlets and patch cords
- enables transmission of all high-speed protocols including 10GBASE-T within the system Cat. 6A
- guarantees a bandwidth of 500 MHz within the system Cat. 6A
- perfectly shielded against Alien Crosstalk and electromagnetic interference

Suitable for installing on cables	with solid wires from AWG 23 to AWG 22
	with outer diameter from 6 mm to 9 mm
Contact pin material	phosphor-bronze alloy coated with 50 μ of gold
Required installation depth	50 mm



p. 074

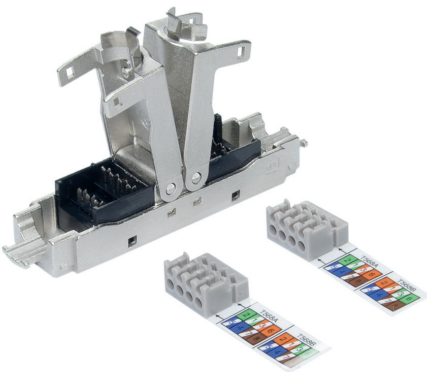


Connector RJ45/s for Cat. 7_A, Cat. 7, Cat. 6_A, Cat. 6 cables

P/N: KE-RJ45-SC6A

- direct termination on Cat. 7_A, Cat. 7, Cat. 6_A, Cat. 6 shielded cables
- special crimping pliers are required for mounting KE-CT-SC6A on p. 074
- ideal for IP camera and wireless devices even where the tool-less connector KE-FT45-C6AS cannot be used for limited space
- supplied with boots for this connector
- enables transmission of all high-speed protocols including 10GBASE-T within the system Cat. 6A
- guarantees a bandwidth of 500 MHz within the system Cat. 6A
- perfectly shielded against Alien Crosstalk and electromagnetic interference

Suitable for installing on cables	with solid wires from AWG 23 to AWG 22
	with outer diameter from 5 mm to 8 mm
Contact pin material	copper alloy coated with 50 µ of gold
Insertion / extraction cycles	min. 750
Required installation depth	23 mm

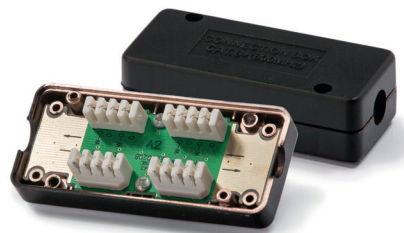


Connection module Category 6A, HD, toolless

P/N: KE-EXT-EA

- designed for reconnecting damaged cables or, in case of necessity, to extend the link
- low profile design
- tool-free, fast and easy installation
- enables transmission of all high-speed protocols including 10GBASE-T
- guarantees a bandwidth of 500 MHz
- perfectly shielded against Alien Crosstalk and electromagnetic interference
- applicable on cables with solid wires (guarantee of anti-corrosive and gas-tight joint)

Suitable for installing on cables	with solid wires from AWG 24 to AWG 22
	with outer diameter from 5 mm to 9,5 mm
Contact pin material	phosphor-bronze alloy coated
Dimensions	61 x 14 x 13 mm



p. 075



Connection module LSA

P/N: KE-AD-C61S

- designed for reconnecting damaged Cat. 7_A, Cat. 7, Cat. 6_A, Cat. 6, Cat. 5E cables or, in case of a need, to extend the link
- LSA terminals ensure connection of cables
- guarantees a bandwidth of 600 MHz
- performance category depends on a specific topology and network configuration
- LSA Krone® tool is required for mounting on p. 075

Suitable for installing on cables	with solid wires from 0,40 mm to 0,64 mm (from AWG 26 to AWG 22)
	with outer diameter from 4,5 mm to 7,9 mm
Dimensions	83,7 x 37 x 23 mm